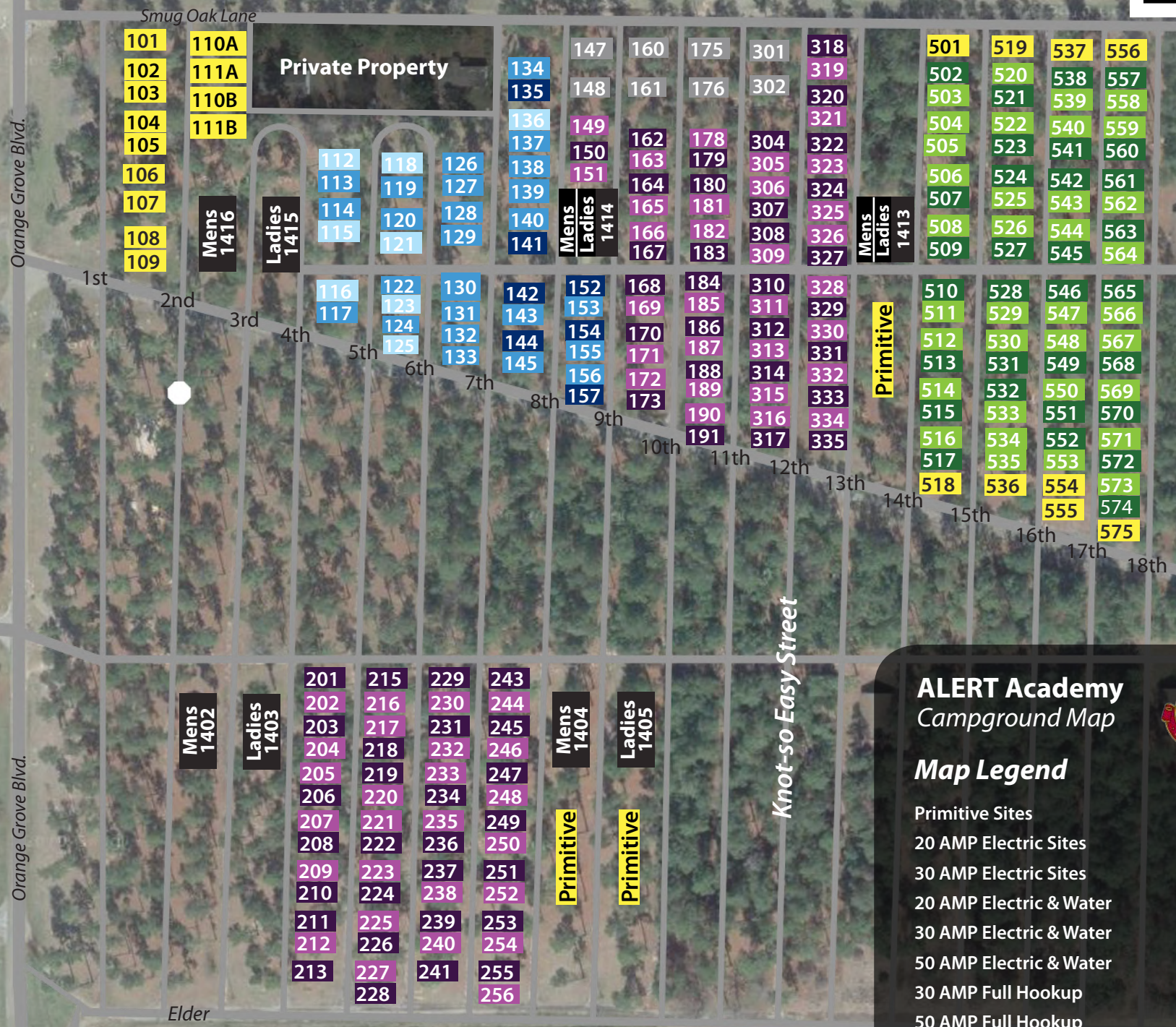


**Dump Station**  
(between 26th and 27th street)

Hangar



Private Property

Mens 1416

Ladies 1415

Mens Ladies 1414

Mens Ladies 1413

Mens 1402

Ladies 1403

Mens 1404

Ladies 1405

Primitive

Primitive

Primitive

**Dump Station**  
(between 6th and 7th street)

**ALERT Academy**  
Campground Map

**Map Legend**

- Primitive Sites
- 20 AMP Electric Sites
- 30 AMP Electric Sites
- 20 AMP Electric & Water
- 30 AMP Electric & Water
- 50 AMP Electric & Water
- 30 AMP Full Hookup
- 50 AMP Full Hookup
- 50 AMP Paved Full Hookup

To US Hwy 80



For more information,  
call the Camp Office  
at **ext. 2101**

# Campground Guidelines

For Medical  
Emergencies  
call **911**

## FIRST AID

In case of emergency, call 911, then call ALERT personnel by dialing 903-636-9201.

## CAMPUS

Please observe traffic signs and be aware of children crossing the streets. Because this is a training facility, there may be some areas that are off limits during your time here. Some of our recreational facilities may be open for public use during your stay, please check with the host for availability. The runway is active, so please use caution when crossing. Stop at the stop sign and look for approaching aircraft. Walking or riding bikes on the runway is prohibited at all times.

## CHILDREN

Be aware of the location of your children at all times, regardless of age. There is a substantial amount of traffic on campus, and large vans have limited visibility.

## QUIET HOURS

Quiet hours are from 10 PM to 6 AM. Please turn off all music and/or generators at 10 PM.

## CAMP FIRES

Wood may be gathered off the campsite or purchased from Bathhouse 1414. Do not cut down any trees. The chosen campfire area should be cleared down to sand or bare ground in a circle approximately five feet in diameter. Do not leave fires unattended. Extinguish fires before leaving your campsite or retiring for the evening. Respect all burn bans posted by the Camp Office.

## SITE LIMITATIONS

Ropes and lines anchored to trees must be tied 80 inches or higher and confined to your campsite. All vehicles, trailers and personal property must be stored within your site, not to impede onto camp roads. RV slides must not restrict access to site post or extend beyond the post.

## LAUNDROMAT

There are washers and dryers available in Bathhouse 1414. It costs \$2.00 to wash/dry one load of clothes.

## DUMP STATION

There are dump stations located on the north and south sides of the campground on *Smug Oak Lane* and *Elder*. Potable water is also available at these locations.

## CHECKOUT

Logs and rocks should be cleared from site, holes filled, wood stacked against a tree and all trash taken to the dumpster. Please leave the camp area better than you found it.

**Monday–Saturday, self-checkout by 1 PM; Sunday self-checkout by 2 PM. If you need an additional night, please contact the Camp Office.**